

STATE OF THE ART IN ABDOMINAL WALL CLOSURE

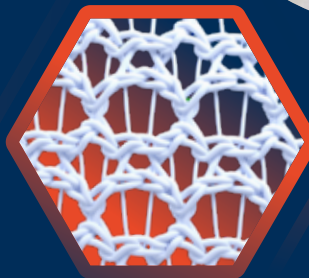
BARCELONA – MAY 31ST, 2025

VENUE: SOFITEL BARCELONA SKIPPER

OPTIMIZING YOUR
ABDOMINAL WALL
CLOSURE

INCISIONAL HERNIA
PREVENTION

EFFECTIVE USE OF
WOUND BUNDLES



TIGR[®]matrix

 **NOVUS SCIENTIFIC.**

WELCOME

We are delighted to welcome you to this instructional course and updates on optimal abdominal wall closure and outcomes. The faculty has shared many clinical and conference platforms over the last decade and bring a wealth of personal knowledge combined with the latest scientific evidence for this one-day course. It will be a wonderful opportunity to reflect on the way you and other surgeons practice abdominal wall closure.

Closing a patient's abdomen is the cornerstone of not just visible outcomes but medium to long-term return of function for our patients.

The course will focus on decision making and surgical technique, incorporating the latest evidence. The format will be very short didactic lectures followed by expansive case discussion focusing on operative techniques. The course will have pre course lecture review and quizzes. Currently Surgeons appear to have somewhat of a blinkered approach to closing the abdomen, with significant numbers ignoring better practice recommendations on surgical technique and use of wound bundles.

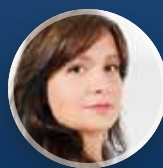
The course will explore how to achieve optimal outcomes following a laparotomy.

With improved follow-up of patients and understanding their functional and oncological outcomes, it is clear, that combining scientifically proven strategies with technical excellence will reduce complications. In particular, the combined use of wound bundles elements and selective mesh augmentation of the abdominal wall closure will more than halve wound infections and incisional hernia occurrence. The course will include case-based learning.

We would like to thank Novus Scientific for their vision in supporting improved health outcomes.



Professor Michael Sugrue
MB BCh BAO MD FRCSI FRACS
Emergency and Breast Surgeon
Letterkenny University Hospital
Donegal, Ireland



Dr. Ana María González Castillo
MD, PhD. F.E.B.S. in
Emergency Surgery
Associate Professor in UPF
Emergency Surgery Unit
Hospital del Mar Barcelona, Spain

LEARNING OBJECTIVES

Understand Current Practice and Outcomes following Laparotomy

Learn techniques in prophylactic mesh placement

Review Optimal Techniques in Closing the Abdominal Wall

Appreciate how to close the open Abdomen

Understand how to prevent incisional hernia

Comprehend the important elements of wound bundle

Novus Scientific were not involved in the course curriculum development, but have provided funding to run the meeting.

FACULTY



Alejandro Bravo Salvá

M.D., Ph.D., F.E.B.S.-A.W.S. Specialist in General and Digestive Surgery, Coordinator of the Abdominal Wall Surgery Unit at Hospital del Mar, Barcelona. Lecturer in Surgery and Human Anatomy at Pompeu Fabra University, Barcelona. Fellow of the European Board of Surgery in Abdominal Wall Surgery.

Dr. Bravo is a surgeon specializing in Abdominal Wall Surgery (AWS), with expertise in complex abdominal wall reconstruction, incisional hernia repair, and inguinal and ventral hernia surgery. He is an accredited robotic AWS surgeon. In 2022, he earned his Ph.D. in Surgery with a dissertation focused on the prevention of incisional hernias in emergency laparotomies. Dr. Bravo has published numerous articles on the prevention of incisional hernias and the management of acute abdominal wall pathologies. He serves as an instructor in Emergency Surgery and the AWS section of the Spanish Association of Surgery. Additionally, he is one of the Coordinators of the AWS Master's Program of the Spanish Association of Surgery and has participated as guest instructor in European Hernia Society's Advanced AWS Cadaveric Course.



Ana María González

MD., PhD. Works at Hospital del Mar in the Emergency Surgical Unit and is Associated Professor at Pompeu Fabra University of Barcelona, Spain

Since 2016 is working at the Surgical Emergency Unit in Hospital del Mar. She obtained her PhD in the Autonomous University of Barcelona with a dissertation on Acute Cholecystitis Risk Factors in 2022, she is Fellow of the European Board of Surgery in Emergency Surgery, ATLS Instructor, DSTC Instructor, ETC potential Instructor, the local Director of the Emergency Surgery Course of the Spanish Association of Surgeons, Faculty of the EASC, and staff member of the Emergency Master at the Medical Science Institute.

Her current interest is focused on clinical research in Emergency and Trauma Surgery, particularly on Acute Cholecystitis, Acute Mesenteric Ischemia, Necrotizing Soft Tissue Infection and Penetrating Trauma. She is very involved in the European Society of Trauma and Emergency Surgery as Committee Member in Visceral Trauma Section, Emergency Surgery Section and Research Committee Section.

FACULTY



Fernando Ferreira

Senior Consultant, Upper Gastrointestinal Emergency and General Surgeon
Department of General Surgery, Portugal CUF Hospital Porto, Portugal

Complex Abdominal Wall Hernia Repair at CUF Specialist in General and Digestive Surgery. Specifically, he is an expert in abdominal wall surgery, robotic surgery, hernia and inguinal hernia.

He is the author of numerous publications in the field and speaker at numerous national and international conferences on surgery and abdominal wall surgery. Member of the European Hernia Society and Portuguese Surgical Society association of surgeons.



Henrik Magnusson Hjorth

CEO, TIGR® Matrix, Novus Scientific, Sweden

Henrik brings over 20 years of diverse experience in the medical device industry, spanning roles in development, marketing, and sales. He has dedicated much of his career to the global launch of innovative medical technologies, including being the co-inventor of TIGR® Matrix. Henrik holds a Master's degree in Molecular Biotechnology Engineering from Uppsala University.



Ian JB Stephens

StARMD Research Scholar, Specialist Registrar Colorectal Surgery Royal College of Surgeons, Ireland

Ian is a specialist registrar in colorectal surgery in Ireland. His research interests include the surgical management of inflammatory bowel disease and primary abdominal wall closure techniques. He has been a faculty member of the international Emergency Abdominal Surgery Course (EASC) since 2020. He is a member of the Irish Surgical Training Group (ISTG), ACPGBI, ASIT, and WSES. He is currently pursuing a full-time research postgraduate degree at the Royal College of Surgeons Ireland through its Strategic Academic Recruitment Medical Doctorate (MD) programme.

FACULTY



Marja A. Boermeester

Professor of Surgery and Clinical Epidemiologist Amsterdam UMC,
Department of Surgery, Netherlands

Specialties in surgery: surgery of abdominal infections (peritonitis, acute and chronic pancreatitis), intestinal failure surgery, complex abdomen, and complex abdominal wall reconstruction (CAWR). Chair or member of many national and international guidelines (WHO, ESCP, WSES, NVvH) on topics of emergency surgery, hernia / CAWR, surgical site infections, abdominal infections and surgery, pancreatitis acute and chronic, intestinal failure. Full member of ERNICA (European Reference Network). Honorary member of Spanish Surgical Society, Swedish Surgical Society, German Surgical Society, and Portuguese Hernia Society.



Michael Sugrue

Emergency and Breast Surgeon Letterkenny University Hospital Donegal,
Ireland

Michael has devoted a life to asking challenging questions and pursuing task that can improve outcome for patients. Co-founder of the World Society of the abdominal compartment syndrome, he is an active technically interested surgeons. He has interest in wound bundles, incisional hernia prevention and most aspects of emergency surgery. He developed the Emergency Abdominal Surgery course. He has a keen interest in technical aspects of surgery and patient outcomes. He has published over 300 papers, has over 10000 citations and H factor of > 50. He is a board member of WSES.

COURSE PROGRAMME – Morning

10.00 INTRODUCTION AND WELCOME

10.05 CURRENT PRACTICE AND OUTCOMES FOLLOWING LAPAROTOMY

10.05 **Current Clinical Outcomes Time to Change?**

– Ana María González

10.15 **Current Clinical Practice and Why you might not have changed**

– Michael Sugrue

10.25 **Current Mesh Results**

– Marja Boermeester

10.35 **TIGR® Matrix Surgical Mesh**

– Henrik Magnusson Hjorth

10.40 **◇ Case Scenario 1 “Old ways and consequences”**

– Michael Sugrue

PANEL: – González – Boermeester – Ferreira – Bravo-Salvá – Stephens

11.00 CLOSING THE ABDOMINAL WALL OPTIMAL TECHNIQUES - HOW TO DO IT

11.00 **How one should close the abdomen with mesh**

– Marja Boermeester

11.10 **◇ Case Scenario 2 “Laparotomy Case”**

– Michael Sugrue

PANEL: – González – Boermeester – Ferreira – Bravo-Salvá – Stephens

11.40 **◇ Case Scenario 3 “Laparotomy Case”**

– Michael Sugrue

PANEL: – González – Boermeester – Ferreira – Bravo-Salvá – Stephens

12.00 **How to close the open Abdomen**

– Michael Sugrue

12.10 **◇ Case Scenario 4 “Open Abdomen”**

– Michael Sugrue

PANEL: – González – Boermeester – Ferreira – Bravo-Salvá – Stephens

13.00 LUNCH

COURSE PROGRAMME – Afternoon

13.30 MANAGING ABDOMINAL WALL COMPLICATIONS

13.30 Burst abdomen and dehiscence
– Ana María González

13.45 Managing mesh complications
– Marja Boermeester

14.00 Learning from our mistakes Case based
– Michael Sugrue



14.15 APPROACH TO DEALING WITH FISTULA

14.30 How to manage a fistula
– Fernando Ferreira

14.45 ♦ Case Scenarios 5 “Kocker Incision”
– Michael Sugrue

PANEL: – González – Boermeester – Ferreira – Bravo-Salvá – Stephens

15.10 CONTROVERSIES IN INCISIONAL HERNIA REPAIR

15.10 The sandwich technique for Open incisional hernia
- Should it be a standard?
– Michael Sugrue

15.25 Fasciotens will it replace TAR/Component Separation?
– Fernando Ferreira

15.40 KEY LEARNING POINTS

15.40 – Michael Sugrue

15.50 COFFEE AND MEETING CLOSURE AND BEGINNING OF YOUR NEW PRACTICE!

COURSE TESTING AND COMPLETION

- Pre-course Quiz will need to be undertaken to enhance your learning experience.
- Course Certificate.
- Delegates will receive a certificate of attendance on completion of the course and the course feedback. Certificate of attendance will be provided only to delegates who attend the entire course.
- *CME RCSI - Credit 5 points*

PARTICIPANT PROFILE

- The participants should ideally be consultants or trainees with more than 3-year post qualification experience. The course will be run in English.

REGISTRATION



<https://novusscientific.com/tigrmatrix-invitation/>

Please reply with your contact details to receive further information about this upcoming event and to complete your registration.

Once you have submitted the requested information and secured your place at this course, you will receive a confirmation email followed by exclusive training materials.

Important:

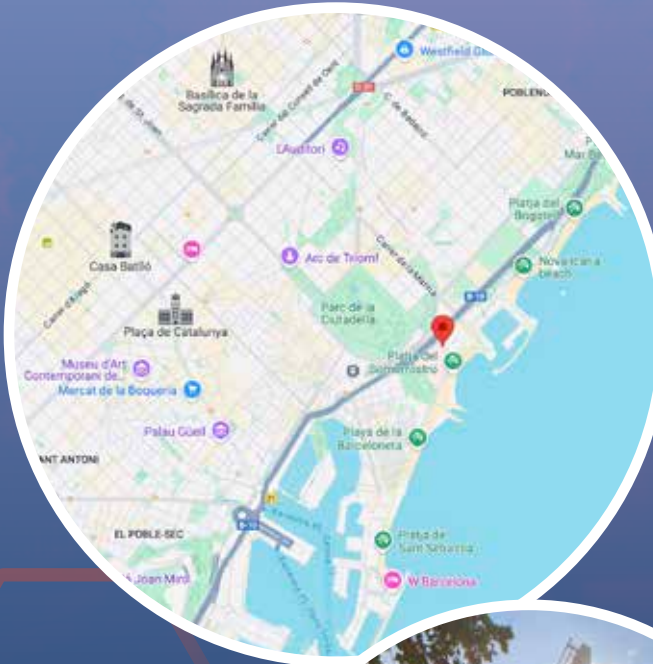
As this course is offered free of charge, courtesy of our exclusive sponsor Novus Scientific, failure to cancel your registration by the deadline may result in a fee of 150 € being charged to cover the costs of the speakers and facilities.

If you are unable to attend after registering, you must confirm your cancellation by April 30, 2025. This allows others who wish to participate to take your spot. ***This one-day course will be limited to 75 participants.***

Our practices are aligned with GDPR and similar privacy frameworks globally, visit "Terms of Use" to find out more.

Enquiries: yolande.cuthill@novusscientific.com

VENUE & HOTEL SUGGESTIONS



Softel Barcelona Skipper

Av. del Litoral 10, 08005 Barcelona SPAIN

- Hotel Acta Voraport located in the Poble Nou district.
- H10 Marina Barcelona Hotel
- NH Barcelona Diagonal Center
- Hotel SB Icaria
- Ibis Styles Barcelona City Bogatell
- Hotel Colonial Barcelona

IMPORTANT REMINDER!

Barcelona will be hosting the Formula 1 Grand Prix this weekend, which is expected to impact hotel availability. Plan accordingly!

